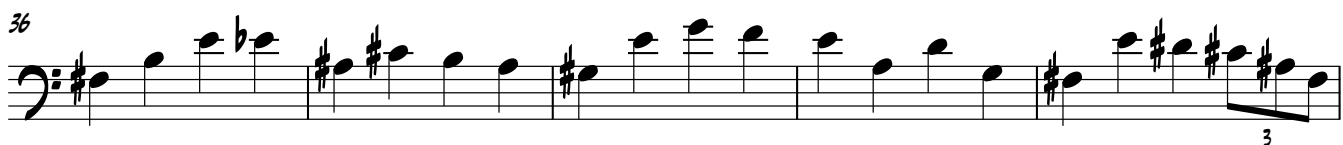


SECOND SIGHT

PHIL MILLER

A ♩ = 168

B



2

ACOUSTIC BASS

45 **F** **30** **3** **2**

The image shows a musical staff for acoustic bass. It begins with a bass clef and a key signature of one flat (B-flat). The staff contains four measures. The first measure is marked with a box containing the letter 'F' and the number '45' above it. The second measure has a thick black bar across the staff with the number '30' above it. The third measure has a thick black bar with the number '3' above it. The fourth measure has a thick black bar with the number '2' above it. A vertical line is present between the third and fourth measures.