

CALYX

♩=60

Am7(11) G#13

3

Bb7(11) CΔ

5

Bm7 B7(b9)

7

Cdim Adim F#dim Em9

9

Em9 F#m9 b6

11

Am7(11) G#13

13

Bb7(11) CΔ

15

Bm7 B7(b9)

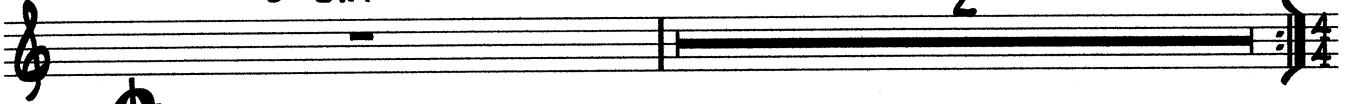
2

ALTO SAXOPHONE

17

B^b DIM

E^bM⁹ 2



20

F^bM⁹b⁶



22

C^b

