

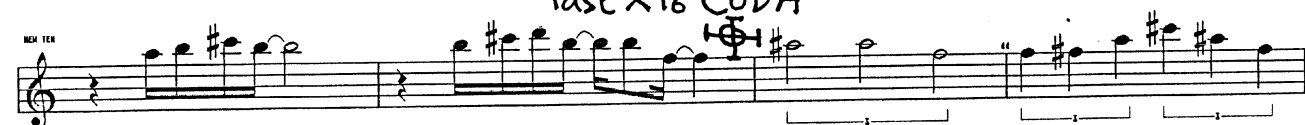
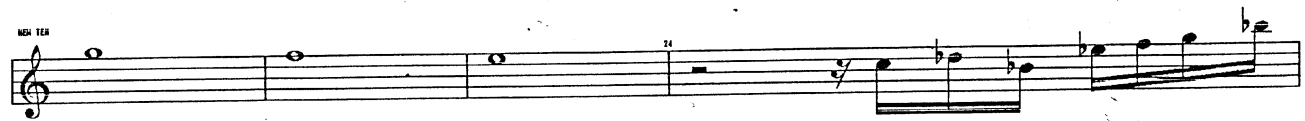
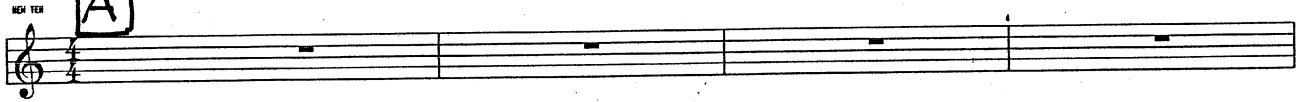
TENOR B♭
SAX

Jan 04

Conspiracy Theories Phil Miller
Bb tenor sax page 1 of 3

semi quaver triplet feel.

A



last x to CODA

Tempo change
3/4 = ♩

TENSAX
BB

Jan'04

Conspiracy Theories Phil Miller
Bbtenor sax page 2 of 3

8 2

A(b9,11) Dm7/9 Dm6/9 G7,6+11

C7+11 Eb7/9+11 A(b9,11) Dm6/9

G#13 Gm6/9 A7+11 D/Bb

Bm7 F#7,11 D/A E/B

D/E E/F# tempo. Bm7 C#7+9

SAX SOLO

D7+9+11 til cue some A(b9,11) /

Tempo ch.

4 4 4 4

Dm7 Db7+9 C7/9 Eb7+11

A(b9,11) Dm6/9 G#13 Gm9

A7+11 D/Bb Bm F#7,11

Ten Sax
Bb

Jan 04

Conspiracy Theories Phil Miller
Bb tenor sax page 3 of 3

Musical staff with a treble clef and a 4-measure rest. Measure numbers 128 and 132 are indicated.

Tempo $\text{♩} = 3$ $Bm7$

$F\#7,11$

Musical staff with a treble clef, 4/4 time signature, and a melodic line. Measure numbers 132 and 136 are indicated.

$Bm7$

$F\#7,11$

D/A

E/B

Musical staff with a treble clef and a melodic line. Measure numbers 140 and 144 are indicated.

D/E

$E/F\#$

$Bm7$

$C\#7+9$

Musical staff with a treble clef, a melodic line, and a double bar line with a repeat sign. Measure numbers 148 and 152 are indicated.

To Top

CODA

D. Sal Coda

Musical staff with a bass clef and a melodic line. Measure numbers 156 and 160 are indicated.

Musical staff with a treble clef and a melodic line. Measure numbers 164 and 168 are indicated.

Musical staff with a treble clef and a long melodic line. Measure numbers 172 and 176 are indicated.

fin.