

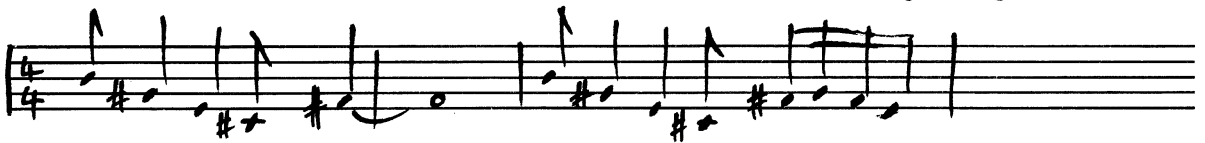
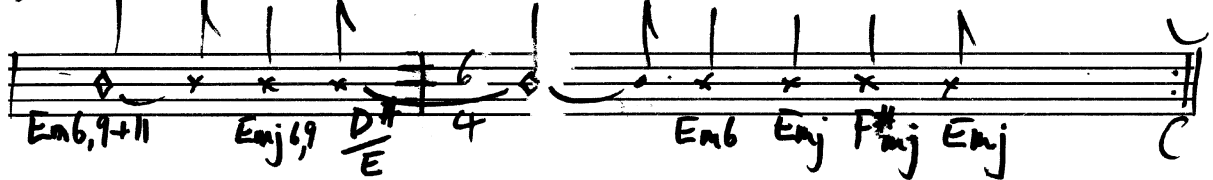
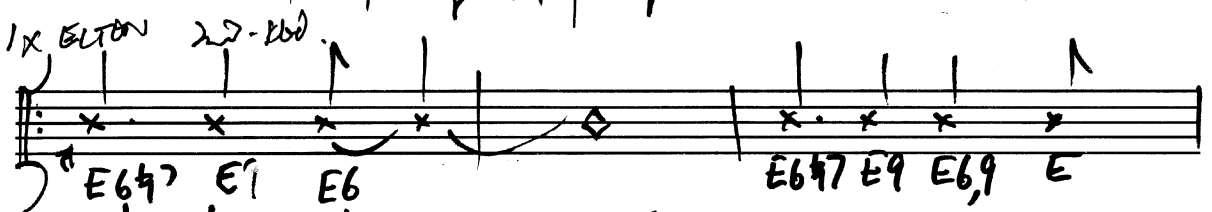
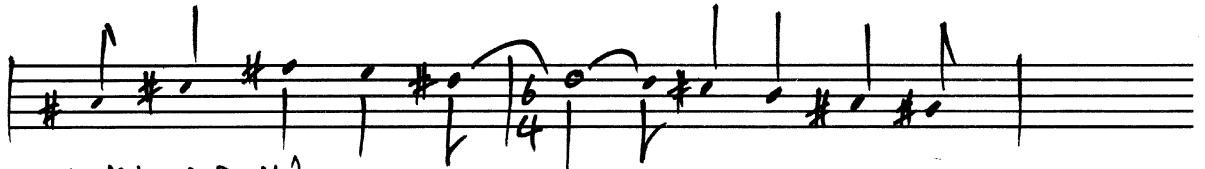
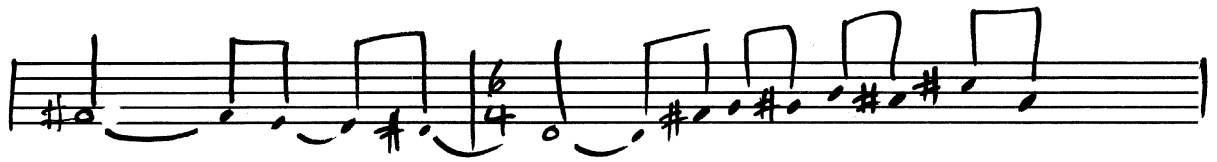
PART I

$\text{♩} = 140$

Eastern Region

**A**

# Eastern Region 2



# Eastern Region 3

Handwritten musical score for Eastern Region 3. The score consists of a melody line and a bass line. The melody line starts with a treble clef and a key signature of one sharp (F#). It features several triplet markings (indicated by a '3' over a bracket) and various note values including quarter notes, eighth notes, and sixteenth notes. The bass line starts with a bass clef and a 4/4 time signature. It contains several chords, including F#7, G, and F#7b9. The score is written in a clear, legible hand.

Handwritten musical score showing three measures of chords:

- Measure 1:  $F\#7b9$
- Measure 2:  $Bb7+11$
- Measure 3:  $E7+11$

Two empty musical staves, one above the other, with no notes or markings.