

Call Sign

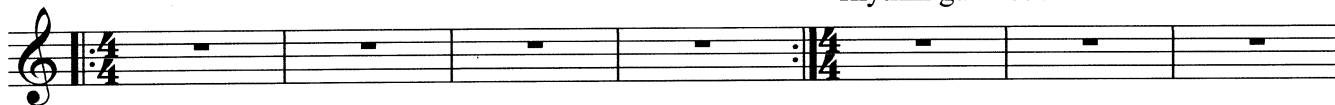
Trumpet in B \flat

Call Sign Phil Miller
B \flat trumpet page 1 of 4

A

Drums and Bass set up groove etc

rhythm gtr = cue 4 bars



B

C $^{13}b9\#11$



G $7(b10)$

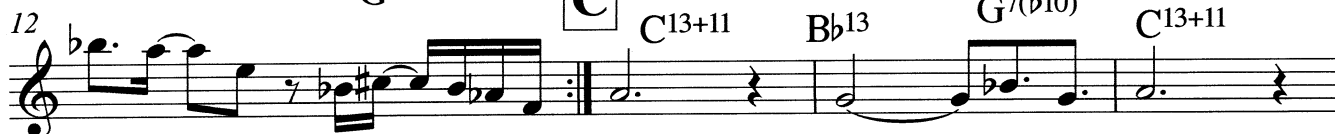
C

C $^{13}+11$

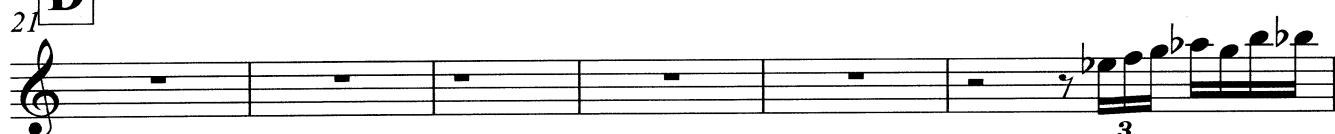
B \flat^{13}

G $7(b10)$

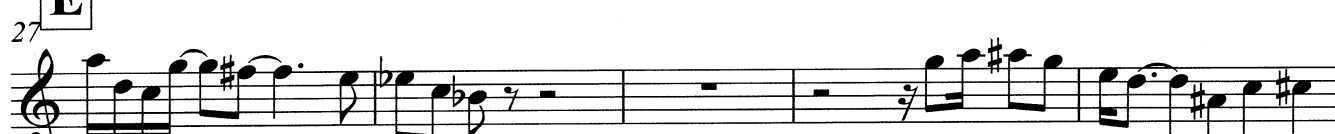
C $^{13}+11$



D



E

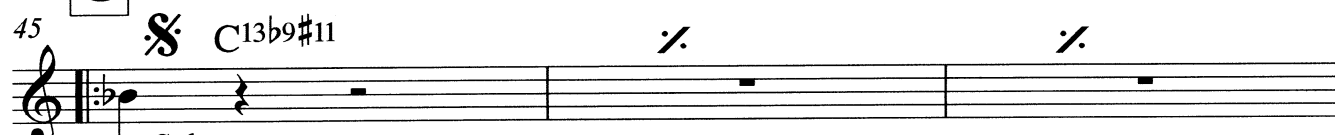


F



G

C $^{13}b9\#11$



Solos

Trumpet in B \flat

Call Sign Phil Miller
B \flat trumpet page 2 of 4

2

48 C¹³ G^{7(b10)} **H** C¹³⁺¹¹ B \flat ¹³ G^{7(b10)} C¹³⁺¹¹ E \flat ¹³ G^{7(b10)}

53 C¹³⁺¹¹ G^{7(b10)b13} C¹³⁺¹¹ E \flat ¹³ G^{7(#9)+11} C \sharp ¹³

57 **I** C^{13b9#11} /: /: C^{13b9#11} G^{7(b10)}

61 C^{13b9#11} /: G^{7(#9)+11} B \flat ^{13b9} C¹³ **J** C^{7b10b13}

65 C^{7(b9)#11/13} F \sharp /C E \flat ^{7b10} C¹³ C^{sus4/9} C¹³

69 C¹³ C¹³ G⁷ **K** F^{7b9(#11)} F¹³

73 F⁷ E \flat ^{7/A} D^{13#11} A^{7b10} F^{13#11} E \flat ^{7(#9)13(#11)} D⁷⁺ C^{7(#9)+11} G⁷

77 F⁷⁹ A \flat ⁷⁹⁺¹¹ G^{7(#9)+11} C \sharp ¹³ C^{13b9(#11)} C⁷ C⁷⁺¹¹ C \sharp ¹³ **S**

81 **L** C^{13b9#11}

after Solos play line starting at L thru Q to end

83 G^{7(b10)}

Trumpet in B \flat

Call Sign Phil Miller
B \flat trumpet page 4 of 4

4

114 $A\flat^{79+11}$ $G^7(\#9)+11$ $C\#^{13}$ $C^{136/9}(\#11)$ C^7 C^7+11 $\$$

117 \boxed{Q} \oplus Coda
Drums Solo

119

123

130 \boxed{R}