

Bb

P. 4

Mel 1 U

Mel 1 U  
B13b9      # 7+9

Mel 1 U

Mel 1 U  
B13b9

Mel 1 U

Mel 1 U  
B

Mel 1 U

Mel 1 U  
B

Mel 1 U

Mel 1 U  
B

Mel 1 U

Mel 1 U  
B

Mel 1 U

ENTER aft. Solo

Mel 1 U  
EG

Mel 1 U

Mel 1 U  
EG

*BB*

*P.F.*

mel 1 U

mel 1 U

mel 1 U

mel 1 U

mel 1 U

mel 1 U

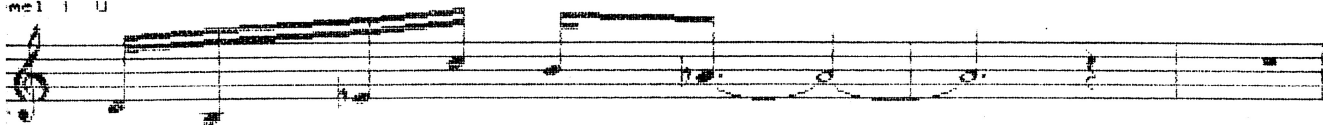
mel 1 U

mel 1 U

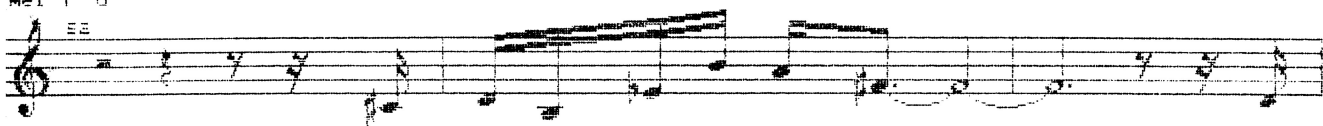
Bb

P.L.

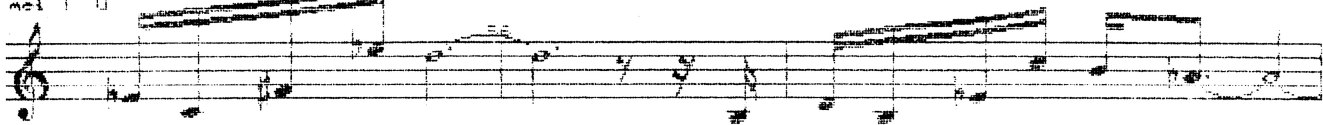
mel 1 U



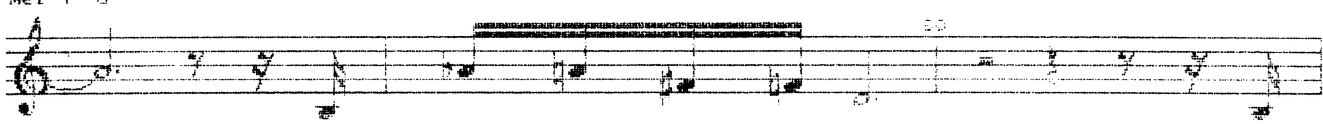
mel 1 U



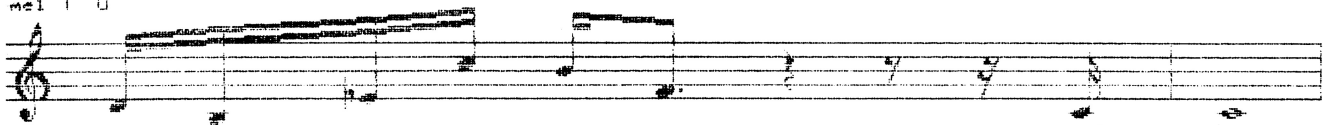
mel 1 U



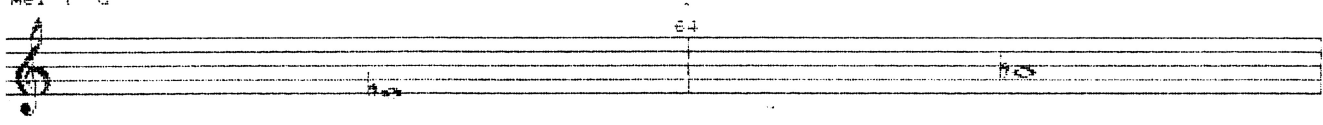
mel 1 U



mel 1 U



mel 1 U



3/2 + 0/0

Phil in A A to end of C