

BASS [A] P. 4 Dotted. 1:10

Bass line staff 1 with notes and chords: A13b9, Eb7+9

Bass 1 U

Bass line staff 2 with notes and chords: A13b9

Bass 1 U

Bass line staff 3 with notes and chords: C7b9, A13b9

Bass 1 U

Bass line staff 4 with notes and chords: F#7+9

Bass 1 U

Bass line staff 5 with notes and chords: A13b9, F#7+9

Bass 1 U

Bass line staff 6 with notes and chords: F#7+9/C, A13, D7, Db7/G

Bass 1 U

Bass line staff 7 with notes and chords: F#13/C, F13/C, Fm7, Ab/Bb, EbΔ, C7/13+11, G7+5, A7/9+13

Bass 1 U

Bass line staff 8 with notes and chords: D7+9+11, G#6/9, C7+9+5, D/Eb, Fm7+9, Bbm7, EbΔ

Bass 1 U

Bass line staff 9 with notes and chords: C7+9, C13b9, Ab, Bb7/9, B(6,11+5), C697

Bass

P.4

bass 1 U



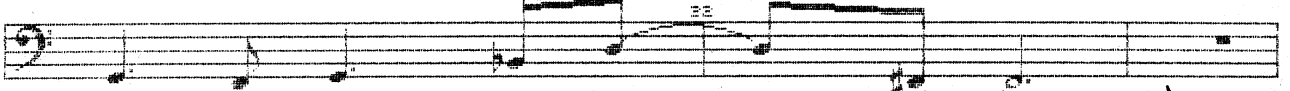
Bbm

Eb7/9

Ab Δ

Au7abs D7b9

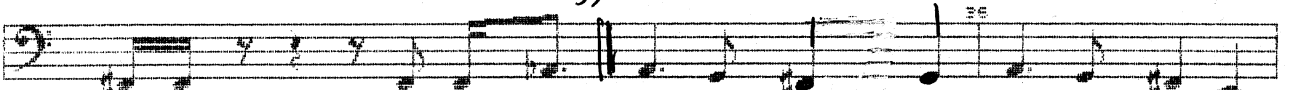
bass 1 U



Gm9

F#13

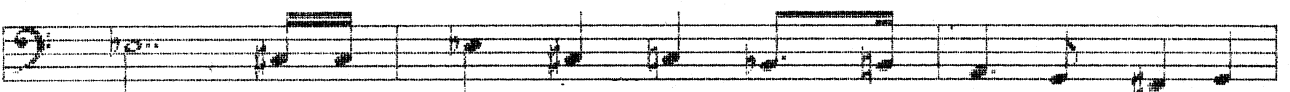
bass 1 U



35 [C]

A13

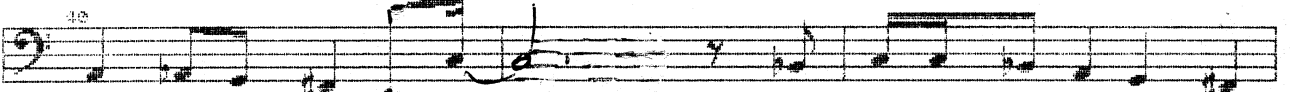
bass 1 U



Eb7/9

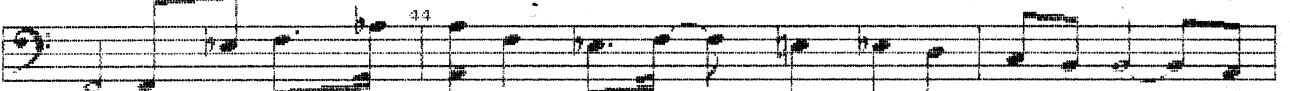
A13

bass 1 U



C7b9

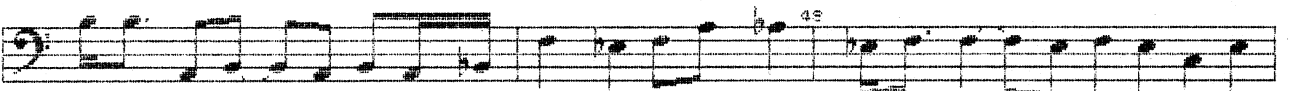
bass 1 U



F(b9)

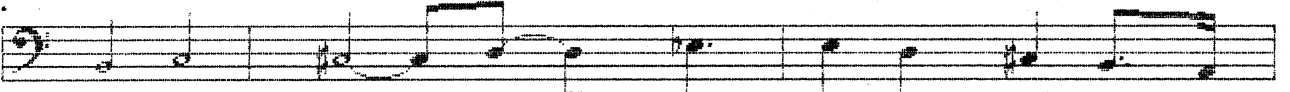
B7/9

bass 1 U



F(b9)

bass 1 U



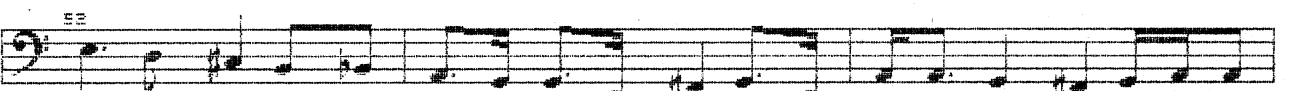
B7/9 C7/9

C#7/9

D7/9


Eb7/9 E7

bass 1 U



A7

Bass
Bb7



74.

A7

Detailed description: This is the first staff of handwritten musical notation. It features a bass clef and a series of eighth notes. Above the staff, the word "Bass" is written in a cursive hand. Below the staff, the chord "Bb7" is written under the first few notes, and "A7" is written under the last few notes. A large handwritten "74." is positioned above the middle of the staff. A diagonal slash is drawn through the staff in the middle section.

Bass

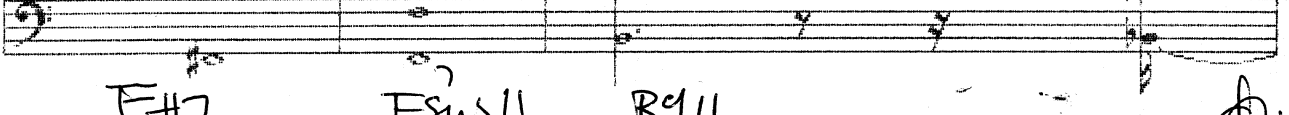


F#7

F#7/G

Detailed description: This is the second staff of handwritten musical notation. It features a bass clef and a series of eighth notes. Below the staff, the chord "F#7" is written under the middle notes, and "F#7/G" is written under the final notes. A diagonal slash is drawn through the staff in the beginning.

Bass




F#7

Fsus11

B911

Detailed description: This is the third staff of handwritten musical notation. It features a bass clef and a series of notes, some of which are beamed together. Below the staff, the chords "F#7", "Fsus11", and "B911" are written under the corresponding notes. A diagonal slash is drawn through the staff in the middle.

Bass



Bbm7b6

Detailed description: This is the fourth and final staff of handwritten musical notation. It features a bass clef and a series of notes. Below the staff, the chord "Bbm7b6" is written under the first few notes. A diagonal slash is drawn through the staff in the middle.