

Tenor Saxophone

Contrary Motion

phil miller

60

$\text{♩} = 60$

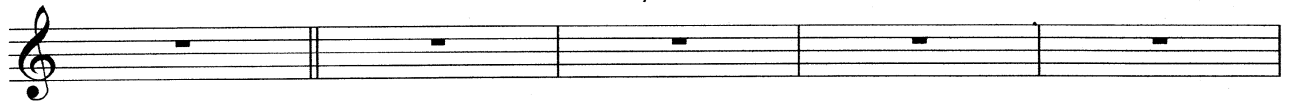
A

A11b9

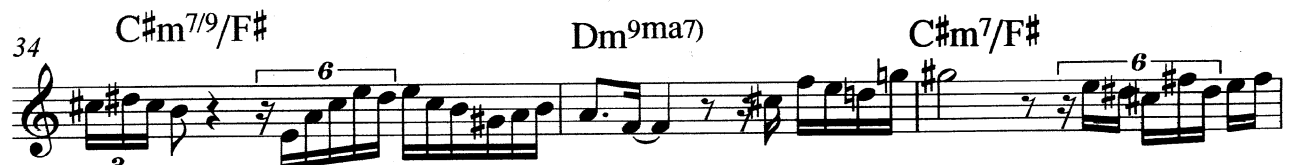
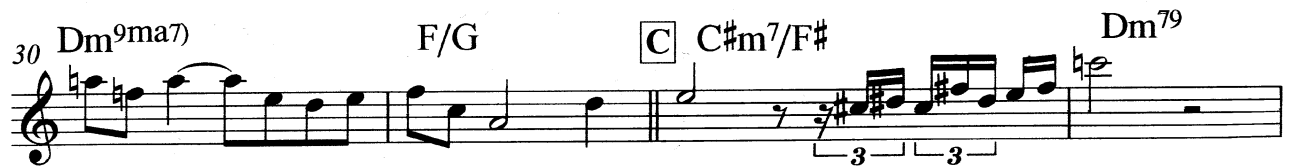
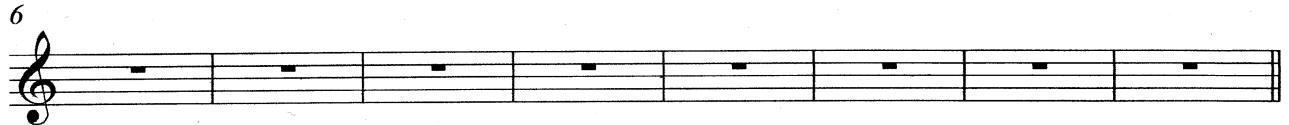
F#11/A

Am7b9/11

Amajsus4



Bbma7/G Am7b6 Am11/9 Amajsus4 F/A Bm7b5 Amajsus4 Amajsus4



2

45 Emaj/F E A^{11b9} F^{#11/A} Am^{7b9/11} Amajsus⁴

50 Bbma^{7/G} Am^{7b6} Am^{11/9} Amajsus⁴

54 F/A Bm^{7b5} Amajsus⁴ Amajsus⁴

F 58 Bbma^{7#5/D} D^{#/C#} Cma^{7#5}
Double time Bbma^{7#11}

63 F/B

68 Gma^{7#5/A} Fma^{7#5/G#} C^{#/G}

74 D^{9/F#} G^{7/9/B} Ema^{7#5/E}

80 D^{#7#11b10} D^{7b13b10}

83 Gma^{7#5/C#}

86 D^{#7/#11/6/9} C^{13#11b9}

89 Dm^{9ma7} F/G

94 C#m7⁹/F# Dm7¹¹

98 C#m7/F# Dm⁹ma7)

102 C#m7/F# Dm⁷9

106 C#m7⁹/F# Dm⁹ma7)

110 G Ama⁷#11/13 A⁷9#5 B7b13b10b9 G13#11/9) E11b9

♩ = 60
Half Time

115 Emaj/F last time to CODA H Ama⁷#11/13 A⁷9#5 B7b13b10b9

6 Half Time

119 G13#11/9) E11b9 ♩ = 60 Emaj/F