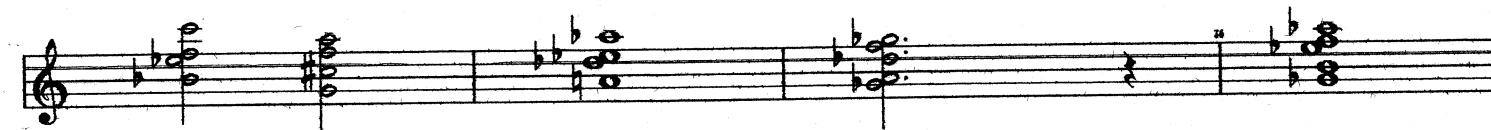
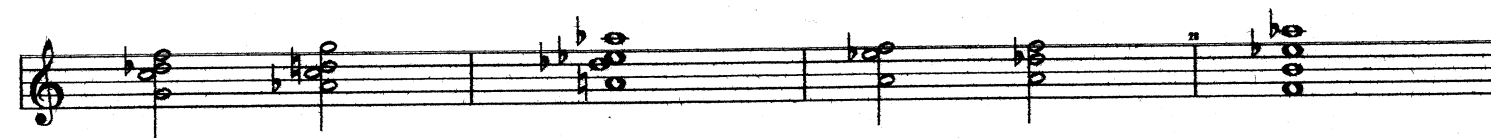
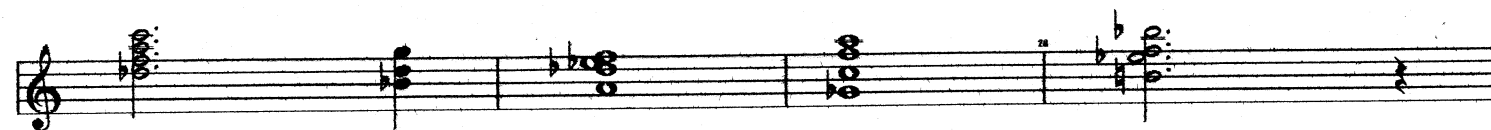
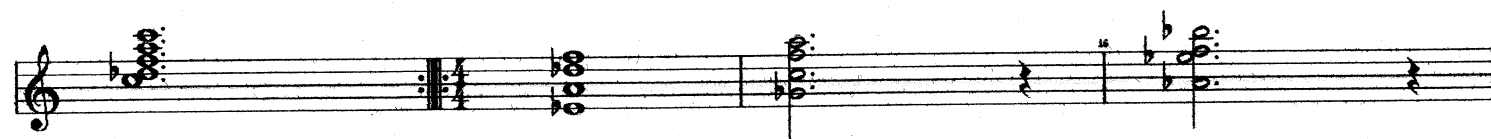
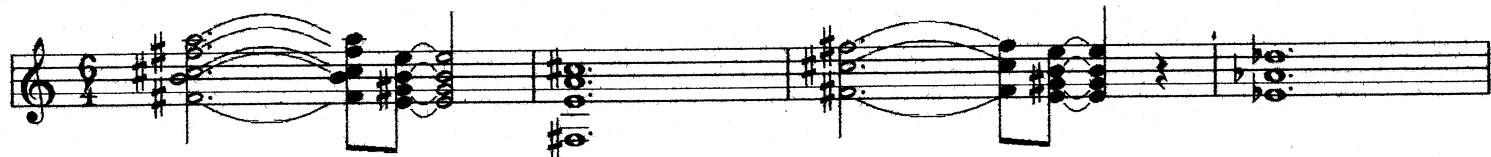


Crackpot chords page 1



Crackpot chords page 2

The image displays eight staves of guitar chord notation. Each staff starts with a treble clef and a key signature of one flat (Bb). The notation includes chord symbols (circles with letters) and fret numbers (numbers on the staff lines) placed above the strings. Many chords are connected by curved lines, indicating they are to be held together. The diagrams show various chord voicings, including triads, dyads, and full chords, often with specific fingerings indicated by numbers 1-4. The final staff shows a long, sustained chord structure.