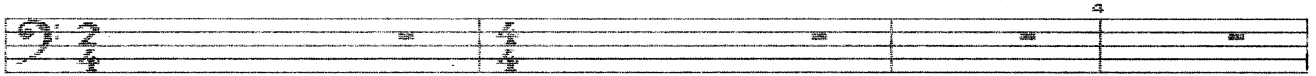


# DIGGING IN

Digging In Phil Miller |  
bass page 1 of 5

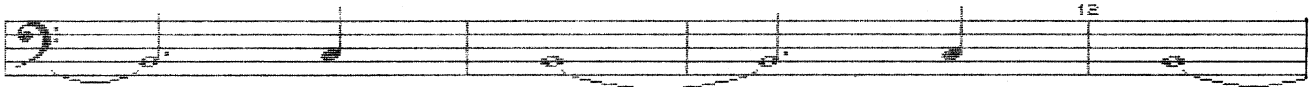
bass



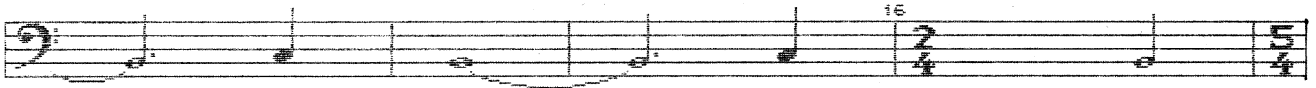
bass



bass



bass



bass

**E7#9+5**     %     **Fm9b7**     %



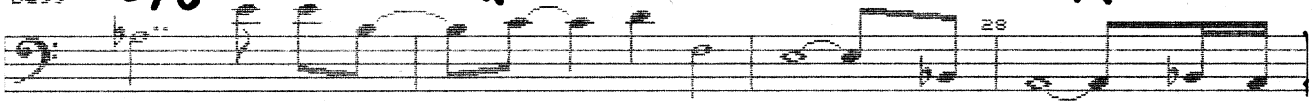
bass

**Dm9**     %     **G11**     %



bass

**E/G#**     %     **A(b9)**     %



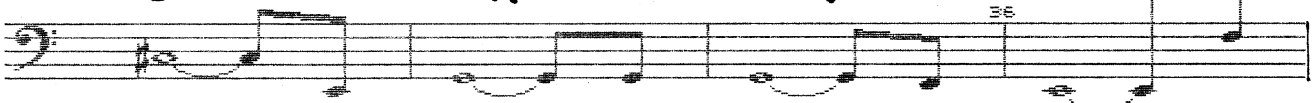
bass

**Gm9**     %     **E/Dm**     %



bass

**C#7+9**     %     %     **E7#9+5**



D.1.

Bb7

fall x's ex last  
G7

x 8

last x (8th)

Digging In Phil Miller  
bass page 2 of 5

Bass line 1: 5/4 time signature, starting with a double bar line. The melody consists of eighth and quarter notes. Chords are indicated above the staff.

Bb(9)

G7+5

F#7  
Ab

Bass line 2: 4/4 time signature, starting with a double bar line. The melody consists of eighth and quarter notes. Chords are indicated above the staff.

Bbm6

Bb7+5  
A

C#7+11  
C

Bass line 3: 4/4 time signature, starting with a double bar line. The melody consists of eighth and quarter notes. Chords are indicated above the staff.

Bbm7  
C#

G(b9)  
D

Bass line 4: 4/4 time signature, starting with a double bar line. The melody consists of eighth and quarter notes. Chords are indicated above the staff.

x4

Bb7

Bass line 5: 4/4 time signature, starting with a double bar line. The melody consists of eighth and quarter notes. Chords are indicated above the staff.

G7

x2 Bb(9) G7+5

Bass line 6: 4/4 time signature, starting with a double bar line. The melody consists of eighth and quarter notes. Chords are indicated above the staff.

F#7  
Ab

Bbm6

Bb7+5  
A

Bass line 7: 4/4 time signature, starting with a double bar line. The melody consists of eighth and quarter notes. Chords are indicated above the staff.

C#7+11  
C

Bbm7  
Db

G(b9)  
D

Bass line 8: 4/4 time signature, starting with a double bar line. The melody consists of eighth and quarter notes. Chords are indicated above the staff.

x5

Bass line 9: 4/4 time signature, starting with a double bar line. The melody consists of eighth and quarter notes. Chords are indicated above the staff.

# D.1.

bass

Bass line starting at measure 64. The notation includes eighth and sixteenth notes with slurs. Measure numbers 64 and 65 are indicated above the staff.

bass

Bass line starting at measure 66. A handwritten annotation "X2 E7+9 %" is written above the staff at the end of the line.

bass

Bass line with handwritten annotations "Fm9b7" and "Dm9" above the staff. Measure numbers 70 and 72 are indicated above the staff.

bass

Bass line with handwritten annotations "G11" and percentage signs (%) above the staff.

bass

Bass line with handwritten annotations "E/G#" and "A(-9)" above the staff. Measure number 76 is indicated above the staff.

bass

Bass line with handwritten annotations "Gm9" and percentage signs (%) above the staff. Measure number 80 is indicated above the staff.

bass

Bass line with handwritten annotations "E/Dm" and "C#7+9" above the staff. Measure number 84 is indicated above the staff.

bass

Bass line with handwritten annotations "E7+9" and percentage signs (%) above the staff.

bass

Bass line with handwritten annotations "Bb7+11-9", "G7+11-9", and "X7" above the staff. Measure number 88 is indicated above the staff.

bass

Bass line starting at measure 92. Measure number 92 is indicated above the staff.

D.1. Eb7+9

BASS

96

BASS

100

EC9+11 47

A7.9+11

(ignore dots)

BASS

104

DC9+7+11

Am9 47

A7+11

D67+9

BASS

108

G-47+11

Em7

BASS

112

Em 47

BASS

116

F#7

F#7+9

BASS

120

Bm7

Bm7 9

C7 9+11

BASS

124

Bm6

Bm9

C7+11

Bm7 9

BASS

128

C7 9

Bm9 47 6

C 7 9+11

BASS

132

Bm6 7 11

C7

Bm7 11

D. 1.

1st x Digging In Phil Miller  
E♭7+9 bass page 5 of 5

bass 124 C7.9+11.13

bass 2x E♭7+9

bass !.97

bass E♭m7 Fm7 G♭(13) E♭m7 Fm7

bass 136 D♭(11) E♭m7 Fm7 G♭(13)

bass E♭m7 Fm7 140 D♭(11)