

Medley

A rubato

5

rhythm of gtr and brass mel ³

3

Detailed description: This staff contains the first five measures of section A. It begins with a 4/4 time signature and a whole note. The second measure changes to 7/4 and contains a triplet of eighth notes. The third measure returns to 4/4 with a half note. The fourth measure is a 7-measure rest. The fifth measure is a triplet of eighth notes. A '3' is written above the first triplet and another '3' is written above the second triplet.

10

Detailed description: This staff contains measures 6 through 9. Measure 6 is a triplet of eighth notes. Measure 7 is a half note. Measure 8 is a half note. Measure 9 is a triplet of eighth notes. The time signature changes to 2/4 at the end of measure 9.

14

3

Detailed description: This staff contains measures 10 through 13. Measure 10 is a triplet of eighth notes. Measure 11 is a half note. Measure 12 is a half note. Measure 13 is a triplet of eighth notes. The time signature changes to 4/4 at the end of measure 13.

20

Detailed description: This staff contains measures 14 through 19. Measure 14 is a half note. Measure 15 is a half note. Measure 16 is a half note. Measure 17 is a half note. Measure 18 is a half note. Measure 19 is a half note. The time signature changes to 2/4 at the end of measure 19.

23

3

3

Detailed description: This staff contains measures 20 through 22. Measure 20 is a triplet of eighth notes. Measure 21 is a triplet of eighth notes. Measure 22 is a triplet of eighth notes. The time signature changes to 8/4 at the end of measure 22.

29

fff

Detailed description: This staff contains measures 23 through 28. Measure 23 is a triplet of eighth notes. Measure 24 is a triplet of eighth notes. Measure 25 is a triplet of eighth notes. Measure 26 is a triplet of eighth notes. Measure 27 is a triplet of eighth notes. Measure 28 is a triplet of eighth notes. The time signature changes to 3/4 at the end of measure 28.

B ♩ = 129

34

Rhythm of bass part

Detailed description: This staff contains measures 29 through 33. Measure 29 is a half note. Measure 30 is a half note. Measure 31 is a half note. Measure 32 is a half note. Measure 33 is a half note. The time signature changes to 4/4 at the end of measure 33.

38

C melodybrass black market type feel

Detailed description: This staff contains measures 34 through 37. Measure 34 is a triplet of eighth notes. Measure 35 is a triplet of eighth notes. Measure 36 is a triplet of eighth notes. Measure 37 is a triplet of eighth notes. The time signature changes to 4/4 at the end of measure 37.

42

Detailed description: This staff contains measures 38 through 42. Measure 38 is a triplet of eighth notes. Measure 39 is a triplet of eighth notes. Measure 40 is a triplet of eighth notes. Measure 41 is a triplet of eighth notes. Measure 42 is a triplet of eighth notes. The time signature changes to 4/4 at the end of measure 42.

2

42

48

D

53

(tenor and tromb harmonies)

58

E

64

unison

71

76

80

F

84

(tenor and tromb harmonies)

89

Gm⁷

G

Solo section = letter G & H
Gmsus⁴

Rhythm of bass part

93

x 4 Asus⁴

x 4



H

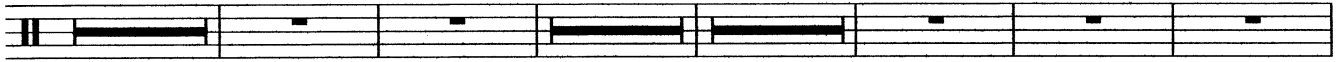
Rhythm of bass part

96 Cm⁷ Cm^{Δb6} Ddim B^bm⁹ Gm^{9Δ} Fm⁹ B^b/F Fm⁷

2

2

2



Solos etc

107 Fm^{9Δ} F⁷sus⁴ Cm⁹ Dm⁷ E^b7+11 Dm⁷ E^b7+11 Dm⁷

4



117

E^b7+11 Dm⁷ E^b7+11 Gm⁷ B^b7+11/13 B7(#9)

2

2

2



126 D7(#9)+5 Gm⁷ A7(b9) B^bΔ+11 E7+9 FΔ+11 B7+9

2

2

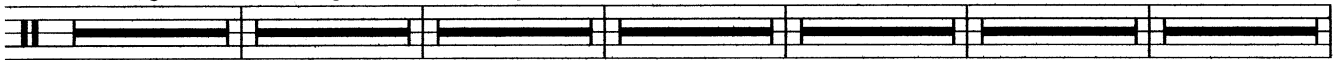
2

2

2

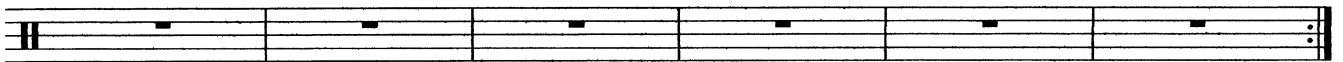
2

2



I

140 B^b/C C/D E^bma7(#4) F⁷sus⁴ Gsus⁴ /



Back to letter G

J



151

Gm⁷

Solo section = letter G & H
Gmsus⁴

x 4



Rhythm of bass part

K



Drum Kit

4

159



165



171

L ♩ = 62
 Cm7 A^bma7(♯4)/C B^b/C F[♯]/C



177

M Cm7 A^bma7(♯4)/C B^b/C G^b/C



181 Cm7

A^bma7(♯4)/C B^b/C G^b/C



185

N F7(b9) F[♯]ma7(♯5) Gm11



188

A^bma7(♯4) Am7(b5) D/B^b



191 Cm⁹

D11b9 D7(b9)+11 B^bΔ F⁹/A



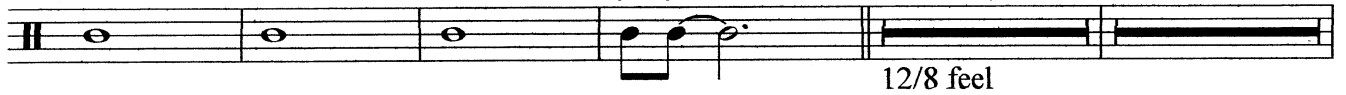
194

O A^b11 Fm11 E^bΔ+11 Dm11 A^bma7(♯4) G7(b9) Cm7
 LAST X PAUSE ON G7-9



198

A^bma7(♯4)/C B^b/C G^b/C F7(b9)+11 **P** F7(b9)+11 E^bm6/8
 ♩ = 118
 4 2



12/8 feel

Drum Kit

208 $B7(\#9)$ $E\flat m6/9$ $F7(\flat9)13$ $A\flat ma7(\#4)/G$ $A\flat6/9$ $B\flat6/9$ $Cm7\flat6$ $Fsus4$

2 2 2 4

220 **Q** $E\flat m6/9$ $B7(\#9)$ $E\flat m6/9$ $F7(\flat9)13$ $A\flat ma7(\#4)/G$ $A\flat6/9$ $B\flat6/9$ $Cm7\flat6$ $Fsus4$

2 2 2 2 4

solos

234 **R**

239

243

246 **S**

251

256

259