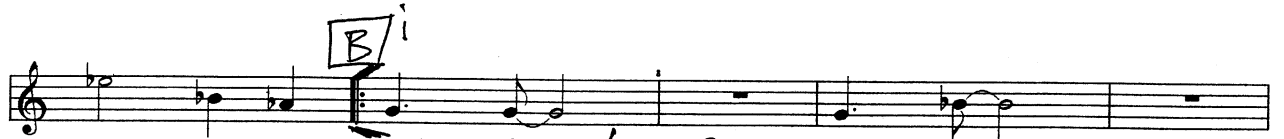
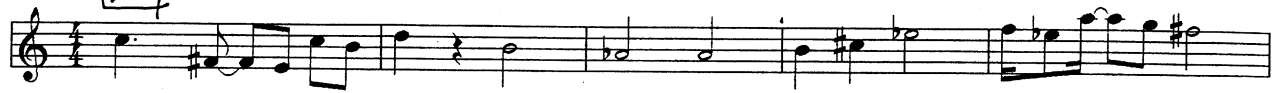


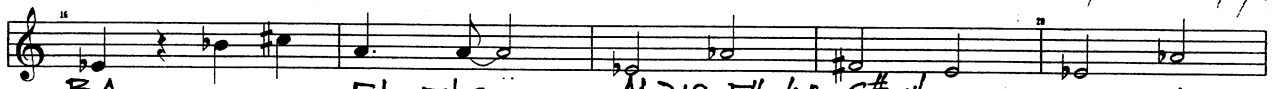
E_b [A] 1:45-7 SITDOWN (PM) mode # 5



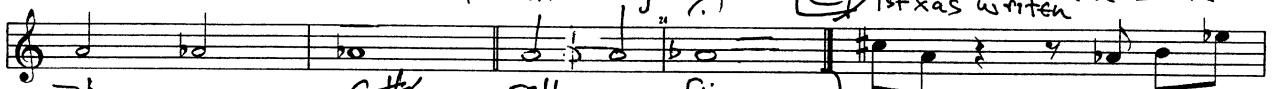
A7/9 Em6/11 G/A C7/9 C13+11



Bm7/11 Eb7 A7b9 Eb13 DG9 Abm7b5 C#49 F#7/11 F#7/6/9



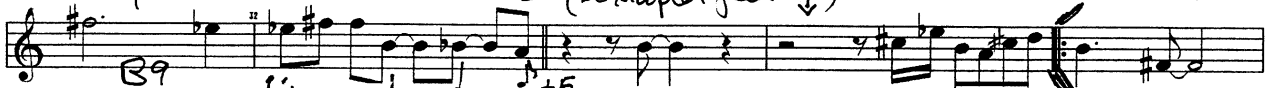
BA
rall x ex last ————— last x only
Eb7b5 AS49 F#7/6/9 C#m1/9 C#m6+11 E+5
2x Do repeat then 3rd x
1st x as written



F#7-5 C#7/F rall fin 3x —> F#m7



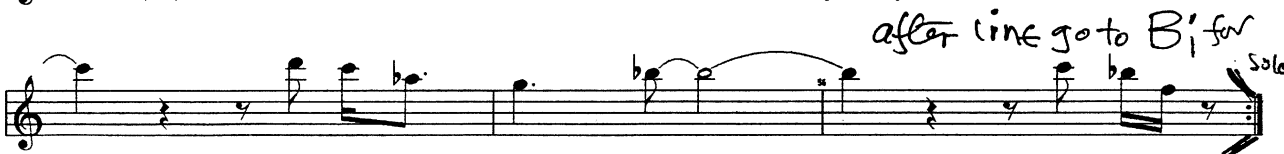
C#7/F B9 ABM (sextuplet feel) F#m7 C#7 2nd X Solo
F 1st X 2



B9 after solo go to Dii Abm7 C#7 C(9/11) B7+9 Ema Ema9 Ema



F#7 F13 Esas4 E(b9/11) F#7 F13 (unison with trumpet.)



after line go to B1 for solos

after solo.

E♭ **D**ii

SITDOWN

code #5.

Handwritten musical notation for the first section of 'Sit Down'. It consists of ten staves of music in treble clef, 4/4 time. The key signature has one flat (B♭). The notation includes various rhythmic patterns, including eighth and sixteenth notes, and rests. There are some fingerings indicated by numbers 1 and 2. The music concludes with a double bar line.

Bii

Handwritten musical notation for the second section of 'Sit Down'. It consists of five staves of music in treble clef, 4/4 time. The key signature has one flat (B♭). The notation includes various rhythmic patterns, including eighth and sixteenth notes, and rests. There are some fingerings indicated by numbers 1 and 2. The music concludes with a double bar line.

Roll

ral.