

Wt Gtr SITDOWN
main mel → $\downarrow = 97$

L DIST Gtr →

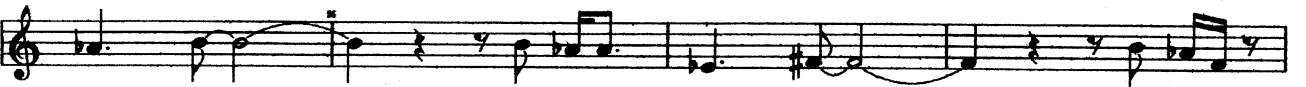
flute

LD Gtr
Harmony

SIT DOWN
from bar 41



Harmn ↑



Sit Down Phil Miller
lead guitar Diads
backing

SIT DOWN GTR DIADS

The image shows four staves of handwritten musical notation for guitar diads. Each staff contains a sequence of notes and chord symbols. The notes are primarily eighth and quarter notes, often beamed together. The chord symbols are written below the notes and include various triads and dyads.

Staff 1: C7, Gm/c, B/c, Eb7/9, F#11

Staff 2: Dm, Gm, C7-9, F#13, FA, Bm7b5, E7+9-9

Staff 3: Asus, A/B, D#A, A/E, F#m7b5, B7+5, A7/9#

Staff 4: Em6, G/c, B+5, Em, F#m7b5, C/c#